

## Order Form

Name \_\_\_\_\_

Shipping address \_\_\_\_\_

\_\_\_\_\_

\_\_\_\_\_

Phone \_\_\_\_\_

Email \_\_\_\_\_

### Payment:

Credit card:  Visa  MasterCard

Name on card \_\_\_\_\_

Credit card # \_\_\_\_\_

Expiration date \_\_\_\_\_ Code: \_\_\_\_\_

or  Check enclosed

## NutritionRx™ Software

**\$149.99** (per single-user license & .pdf manual)

Windows Mobile OS Edition

Windows OS Edition

Update (same OS & current licensee) \$75

Pre-printed manual (*\$15 ea. US Shipping*)

WEB DOWNLOADS of all versions are available. Contact us for hardware compatibility, FREE 30 day trial, special shipping, purchase orders or OH resident sales tax. Excellent multi-license discounts! Tech support is FREE! Order via phone (937-672-3080), online at [www.hightechnutrition.com](http://www.hightechnutrition.com) or by mailing this form to:

High Tech Nutrition, Inc.  
P.O. Box 340280  
Beavercreek, OH 45434-0280

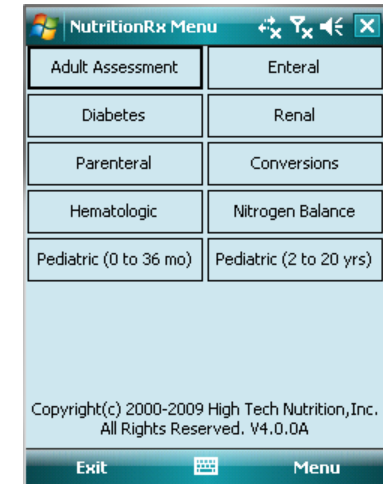
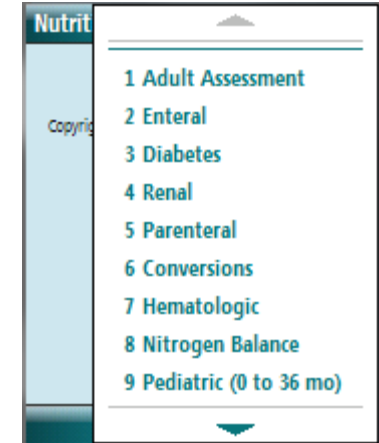
P.O. Box 340280  
Beavercreek, OH 45434-0280

**HIGH TECH NUTRITION, INC.**

SM

**NUTRITION Rx**™

Putting Technology to Work for YOU!



**Nutritional Assessment Software**  
for Windows® or  
Windows Mobile®!

All trademarks are the property of their respective owners.  
©2009. All rights reserved. High Tech Nutrition, Inc.

## NEW NutritionRx™ 4.0 series!

**Comprehensive nutritional assessment software for registered dietitians/nutritionists to optimize MNT.** Saves valuable time and money! Available for Windows Mobile® devices by Motorola, Verizon, Samsung, HTC and others; all screen sizes; portrait and landscape modes. Desktops/laptops using Windows 2000/XP/Vista/7. Questions? Call us and ask for a one time **FREE trial license of NutritionRx™!**

### Adult Assessment– 4 options to choose from!

Harris Benedict Energy Equation (HBEE) with injury and activity factors, optional obesity or amputation adjustments. Enter & **SAVE** own factors as a single number or range. Displays kcal, protein, fluid, BMI, DBW, %DBW, % wt change in English & metric units. Includes Units/kg, Mifflin-St.Jeor Energy Equation and Ireton-Jones original Energy Equation.

### Basic Pediatric Assessment (0-36 mo. & 2-20 yrs)

Determines calories, protein, fluid, BMI (ages 2-20) and percentiles from latest CDC Growth Chart selected. Identifies risk levels when BMI chart selected. English & Metric units. Displays data for 50th percentile (or any number inserted). Z scores and extrapolation to the nearest day with calendar entry!

### Enteral

220+ oral supplements & enteral feeding formulas. Goal kcal or volume, displays kcal, total volume, cc/hr, fluid, % RDI, carbohydrate, protein, fat, fiber, sodium, potassium, magnesium, phosphorus, calcium, iron, osmolality and non-protein kcals. Sorting by nutrient! Add new or delete products in separate USER database!

## Contact Us

High Tech Nutrition, Inc., P.O. Box 340280,  
Beavercreek, OH 45434-0280  
937-672-3080; 614-754-6434 (fax)  
rd@hightechnutrition.com

### Parenteral

Based on initial concentration, determine total and non-protein kcal, percentages and total grams of carbohydrate, protein, and fat as well as rate per hour, grams of protein and fat per kg, carbohydrate in mg/kg/minute (GUR), final concentration and osmolarity.

### Diabetes (Meal Pattern servings)

Calculates kcal, as well as grams and % carbohydrate, protein and fat from entered preferences. Uses actual USDA nutrient values for several types of milk including soy -derived milk.

### Renal (Meal Pattern servings)

Calculates kcal, protein, %HBV protein, sodium, potassium, and phosphorus content for entered preferences in pattern for acute and chronic renal failure, hemodialysis and peritoneal dialysis, with or without diabetes from the 1993 National Renal Diets.

### Conversions, Hematologic and Nitrogen Balance

Convert mg to mEq or mMol and vice versa for calcium, chlorine, magnesium, phosphorus, potassium and sodium. Nitrogen balance (UUN or TUN), Transferrin, MCV, TLC, and MCHC calculations included.

Please visit our website:  
[www.hightechnutrition.com](http://www.hightechnutrition.com)

All trademarks or servicemarks are the property of their respective owners.

## Windows Mobile® Standard screenshots !

**Harris-Benedict** abc Y X  
 Male Age yrs: 75 Usual Wt: 120  lb Actual Wt: 99  
 Female  
 Height: 62  in  cm Wt chg= -21 lb -17.5%  
 Injury: 1.2~1.3 1.2~1.5 25~30 CHF  
 Activity: 1.3 Out of bed/Very light  
 Amp & Frame: 0 0 None%  
 Other: None  
 BEE= 1025  
 TKcal= 1599 to 1733 (35.6 to 38.6)/kg  
 Pro= 53.9 to 67.4 g (1.2 to 1.5)g/kg  
 Fluid= 1123 to 1347 mL (25 to 30)mL/kg  
 BMI= 18.1 kg/m2 (under) 90% DBW  
 DBW= 110 (99 to 121) lb  
 DBW= 49.9 (44.9 to 54.9) kg

**Units/kg** abc Y X  
 Male Age yrs: 75 Usual Wt: 120  lb Actual Wt: 99  
 Female  
 Height: 62  in  cm Wt chg= -21 lb -17.5%  
 Units/kg: 30~35 1.2~2 20~30 Press ulcers  
 Amp & Frame: 0 0 None%  
 Other: None  
 TKcal= 1347 to 1572 (30 to 35)/kg  
 Pro= 53.9 to 89.8 g (1.2 to 2)g/kg  
 Fluid= 898 to 1347 mL (20 to 30)mL/kg  
 BMI= 18.1 kg/m2 (under) 90% DBW  
 DBW= 110 (99 to 121) lb  
 DBW= 49.9 (44.9 to 54.9) kg

**Ireton-Jones** abc Y X  
 Male Age yrs: 75 Usual Wt: 120  lb Actual Wt: 99  
 Female  
 Height: 62  in  cm Wt chg= -21 lb -17.5%  
 Amp & Frame: 0 0 None%  
 Trauma  Breathing  
 Burn  Spontaneous  
 Ventilator-dependent  
 EEE= 1184 Kcal/day  
 BMI= 18.1 kg/m2 (under) 90% DBW  
 DBW= 110 (99 to 121) lb  
 DBW= 49.9 (44.9 to 54.9) kg

**Mifflin-StJeor** abc Y X  
 Male Age yrs: 75 Usual Wt: 120  lb Actual Wt: 99  
 Female  
 Height: 62  in  cm Wt chg= -21 lb -17.5%  
 Activity: 1.3 Out of bed/Very light  
 Amp & Frame: 0 0 None%  
 REE= 903  
 TKcal= 1174 to 1174 (26.1 to 26.1)/kg  
 BMI= 18.1 kg/m2 (under) 90% DBW  
 DBW= 110 (99 to 121) lb  
 DBW= 49.9 (44.9 to 54.9) kg

**Enteral Results** abc Y X  
 Jevity 1.2 Cal  
 Formula: All  
 Kcal= 1000  
 Pro= 46.25g  
 Cho= 141.17g  
 Fat= 32.75g  
 Fluid= 672.5mL  
 Fiber= 15g  
 Osmll= 450  
 NproCal/N= 110 non-Pro Kcal= 815  
 RDI= 83.33% DV= no data  
 Na= 1125mg Ca= 1000mg  
 K= 1541.67mg Mg= 333.33mg  
 P= 1000mg Fe= 15mg  
 Input  
 Vol/hr  
 TVol  Kcal  
 Kcal: 1000  
 TVol= 833.33cc  
 Hrs: 24  
 Vol/hr= 34.72cc

**Ped (0 to 36 mo)** abc Y X  
 M Age: 11.5  mo Usual Wt: 24.33  lb Actual Wt: 23.75  
 F  
 Length: 30.75  in  cm Wt chg= -0.58 lb -2.4%  
 Circum: 18.25  in  cm  
 TKcal= 1056 Protein= 17.2 g  
 Fluid= 1400 to 1670  
 Growth Chart: Zscore= 0.5250646  
 Weight for Age @Percentile: 50 Weight= 22.4 lb

High Tech Nutrition, Inc. © 2009. All rights reserved.